

订货举例

系列代码	接管口径	牙型代码
QSC:单向节流阀 (精密型)	06:1/8" 08:1/4" 10:3/8" 15:1/2"	空白: G P: PT T: NPT

订货举例: QSC系列单向节流阀, 接管口径为1/4", G牙, 其ERP编码为: QSC-08

规格

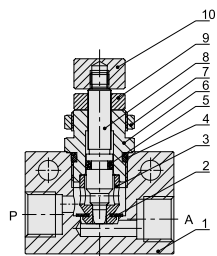
型号	QSC-06	QSC-08	QSC-10	QSC-15
工作介质	空气(经40 μm以上滤网过滤)			
工作压力(MPa)	0.05~1.0			
最大耐压(MPa)	1.5			
工作温度(°C)	-20~70			
接管口径 ①	G1/8	G1/4	G3/8	G1/2
标准额定流量 (L/min)	P→A 0~350	0~860	0~1650	0~1900
重量(g)	A→P 300~450	760~890	1320~1650	1610~1990
	33	50	128	119

①接管牙型有PT牙、NPT牙可供选择。

产品特性

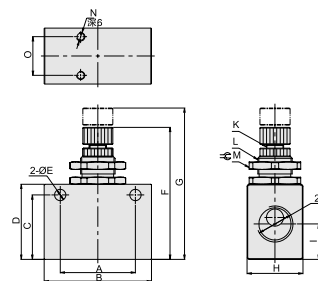
1. 结构紧凑, 调节精度高;
2. 多位置安装, 使用方便;
3. 排气节流, 广泛用于调节气缸的运行速度。

内部结构



序号	名称
1	阀体
2	膜片
3	节流体
4	O型环
5	O型环
6	节流套
7	固定螺母
8	节流柱
9	锁紧螺帽
10	调节螺帽

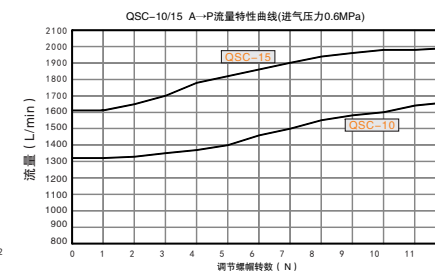
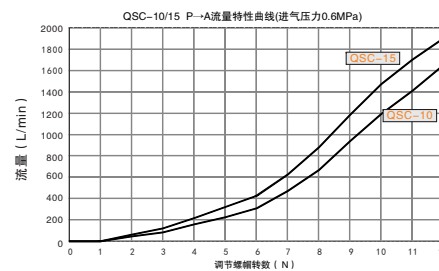
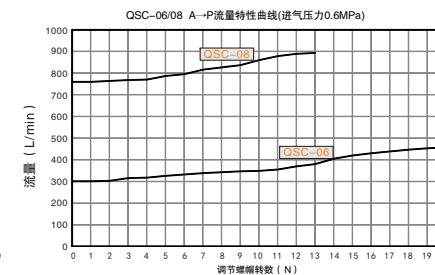
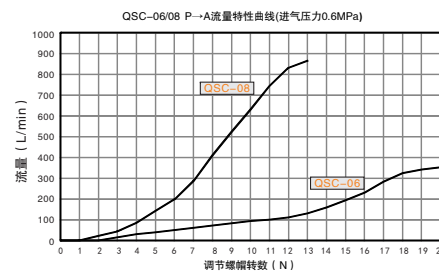
外形尺寸图

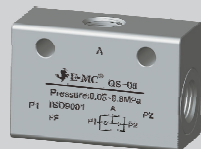
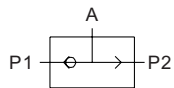


型号	A	B	C	D	E	F	G	H
QSC-06	22	32	20	25	4.3	46	51	15
QSC-08	26	36	23	27	4.3	51	57.5	18
QSC-10	35	50	30	35	5.3	62.5	71.5	26
QSC-15	35	50	30	35	5.3	62.5	71.5	26

型号	I	J	K	L	M	N	O
QSC-06	8.5	1/8	M5X0.25	M12X0.75	14	---	---
QSC-08	13.3	1/4	M6X0.5	M14X1	17	---	---
QSC-10	16.5	3/8	M8X0.75	M16X1	24	M4X0.7	18
QSC-15	16.5	1/2	M8X0.75	M16X1	24	M4X0.7	18

流量特性图





订货举例

系列代码	—	接管口径	—	牙型代码
QS:梭阀		06:1/8" 08:1/4"		空白: G P: PT T: NPT

订货举例: QS系列梭阀, 接管口径为1/4", G牙, 其ERP编码为: QS-08

规格

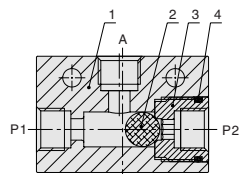
型号	QS-06	QS-08
工作介质	空气(经40 μm以上滤网过滤)	
工作压力(MPa)	1.5-0.8	
最大耐压力(MPa)	1.2	
工作温度(°C)	-20~70	
接管口径 ①	G1/8	G1/4
标准额定流量(L/min)	P1: 700 P2: 500	2300 1700
重量(g)	45	85

①接管牙型有PT牙、NPT牙可供选择。

产品特性

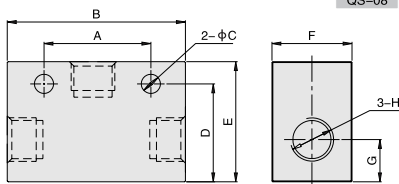
一般不单独在气动系统中使用,通常和主阀一起使用。给主阀的整体控制提供了良好的帮助,从而更好地完成整个系统的控制功能。

内部结构

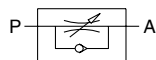


序号	名称
1	阀体
2	密封球
3	端盖
4	O型环

外形尺寸图



型号	A	B	C	D	E	F	G	H
QS-06	24	40	4.3	22	27	18	10	1/8
QS-08	35	50	6.5	27.5	35	22	13	1/4



How to order

Series No.	Port size	Thread type
QSC:Flow control valve (precise type)	06:1/8" 08:1/4" 10:3/8" 15:1/2"	Blank: G P: PT T: NPT

Order sample:
QSC series flow control valve, 1/4" port size, G thread, the ERP code is QSC-08

Specification

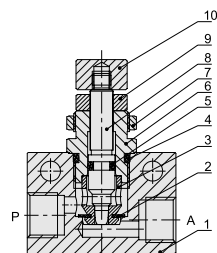
Model (mm)	QSC-06	QSC-08	QSC-10	QSC-15
Working medium	Clean air(After 40 μm filtration)			
Working Pressure (Mpa)	0.05-1.0			
Guaranteed pressure (Mpa)	1.5			
Working temperature (°C)	-20-70			
Port size	G1/8	G1/4	G3/8	G1/2
rated flow (L/min)	P→A 0-350 A→P 300-450	0-860 760-890	0-1650 1320-1650	0-1900 1610-1990
Weight(g)	33	50	128	119

● PT thread, NPT thread is optional.

Product Features

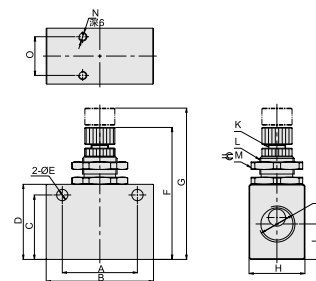
- 1.Compact structure and high precision
- 2.Install in several positions to facilitate ,installation and application
- 3.Apply to exhaust and cut off flow, widely used for cylinder speed adjustment

Internal Structure



No.	Name
1	Valve body
2	Diaphragm
3	Throttle body
4	O-ring
5	O-ring
6	Throttle sheath
7	Fixed nut
8	Throttle column
9	Lock nut
10	Adjustment cap

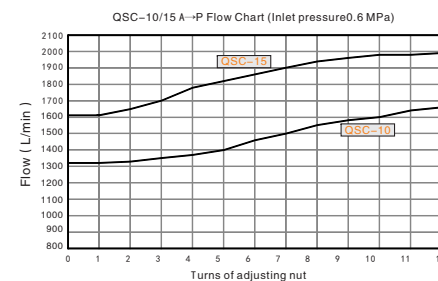
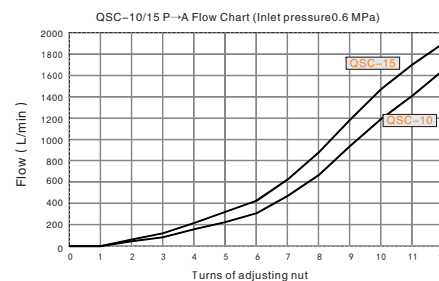
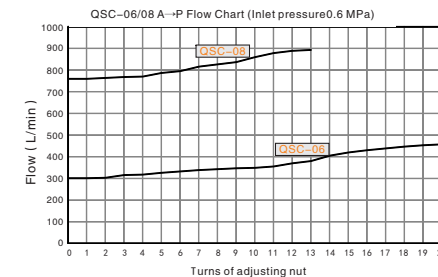
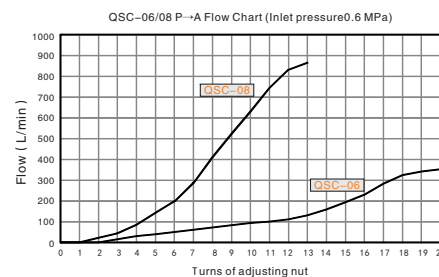
Main Dimension

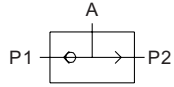
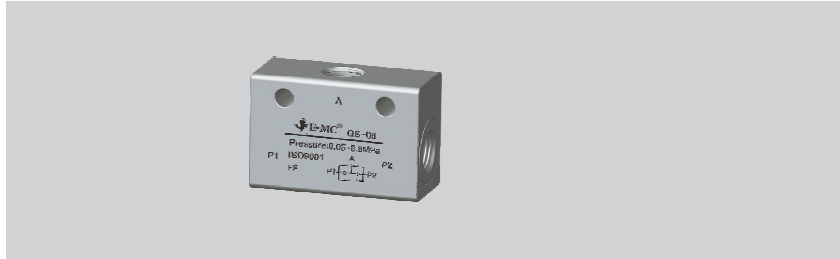


Model	A	B	C	D	E	F	G	H
QSC-06	22	32	20	25	4.3	46	51	15
QSC-08	26	36	23	27	4.3	51	57.5	18
QSC-10	35	50	30	35	5.3	62.5	71.5	26
QSC-15	35	50	30	35	5.3	62.5	71.5	26

Model	I	J	K	L	M	N	O
QSC-06	8.5	1/8	M5X0.25	M12X0.75	14	---	---
QSC-08	13.3	1/4	M6X0.5	M14X1	17	---	---
QSC-10	16.5	3/8	M8X0.75	M16X1	24	M4X0.7	18
QSC-15	16.5	1/2	M8X0.75	M16X1	24	M4X0.7	18

Flow Chart





How to order

Series No.	—	Port size	—	Thread type
QS:Shuttle valve		06:1/8" 08:1/4"		Blank: G P : PT T : NPT

Order sample:
QS series shuttle valve, port size: 1/4", G thread,
the ERP item no.: QS-08

Specification

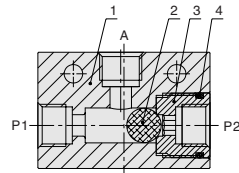
Model (mm)	QS-06	QS-08
Working medium	Clean air(After 40 μm filtration)	
Working Pressure (Mpa)	1.5~0.8	
Guaranteed pressure (Mpa)	1.2	
Working temperature (°C)	-20~70	
Port size ①	G1/8	G1/4
Rated flow (L/min)	P1	700
	P2	500
Weight(g)	45	85

① PT thread, NPT thread is optional.

Product Features

Usually it will not used alone, while used with the main valve together in the pneumatic system.
Offer good assistance for the overall control of the main valve, to better complete the control function of the whole system.

Internal Structure



No.	Name
1	Valve body
2	Sealed Ball
3	End cover
4	O-ring

Main Dimension

Model	A	B	C	D	E	F	G	H
QS-06	24	40	4.3	22	27	18	10	1/8
QS-08	35	50	6.5	27.5	35	22	13	1/4

